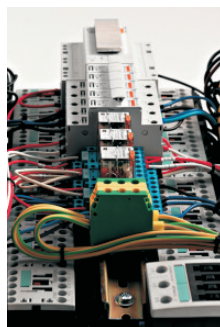


**EXE CONTROLLER DL4 - DIRECT CONTROL LINKABLE**



Power Supply	<b>380/400 VAC 50 Hz</b>	
Power Sockets	<b>400 VAC 16A 6H 3P+N</b>	
Power Plug	<b>400 VAC 32A 6H 3P+N+E with mechanical phase inverter</b>	
3 position running switch		XLR 5 pole link OUT connector
GO button		XLR 3 pole link IN connector
Emergency stop mushroom button		Used with external "STOP and GO" push button panel
Main thermal-magnetic circuit breaker		Direct - Remote mode selector
Manoeuvre selection LED for each channel		Individual motor cut-outs with independent adjustment
Voltage ON LED indicator		Link cable provided

[Support.litectruss.com](http://Support.litectruss.com)

Date of issue  
12 /03 /2006

LITEC s.r.l - Via Raffaello - Mogliano Veneto (TV)  
<http://www.litectruss.com> - <mailto:infolitectruss.com>

Rev. 1